

ORDINANCE 87 - 35

AN ORDINANCE ESTABLISHING A NO WAKE ZONE
LOCATED IN THE NASSAU RIVER IN THE EDWARDS
ROAD, NASSAU LANDING AREA;

WHEREAS, there is considerable damage being done to boats
and dock facilities, and;

WHEREAS, said damage is being caused by boating traffic
operating at high rates of speed, and;

WHEREAS, the Board has received testimony from the public as
to the need for a "No Wake Zone", and;

WHEREAS, the Board finds that there is a safety problem for
boats using the designated area, and;

WHEREAS, the Board held a duly publicized public hearing on
May 19, 1987.

NOW, THEREFORE, BE IT ORDAINED by the Board of County
Commissioners of Nassau County, Florida, that:

ARTICLE 1. TITLE

This ordinance shall be known as the Nassau Landing No Wake
Zone Ordinance.

ARTICLE 2. AUTHORITY

This Ordinance, together with any and all future amendments
tendered, is adopted under the provisions and terms granted by
Chapters 125 and 371, Florida Statutes.

ARTICLE 3. PURPOSE

It is the purpose of this Ordinance to protect the public
safety.

ARTICLE 4. NO WAKE ZONE

There is hereby established a No Wake Zone, said zone being
delineated on the Exhibit "A" attached hereto and made a part
hereof.

ARTICLE 5. DEFINITION

No Wake Zone indicates a restricted or controlled zone to
which a vessel cannot proceed at a speed greater than the speed
which is necessary to maintain steerage.

A motor boat in a designated no wake zone that is:

(a) Operating on a plane is proceeding at a speed that is
greater than necessary to maintain steerage.

(b) In the process of coming off a plane and settling into
the water, which creates more than no wake is proceeding at a
speed greater than that necessary to maintain steerage.

(c) Completely off plane and which has settled into the
water and is proceeding without wake is proceeding at a speed
necessary to maintain steerage.

ARTICLE 6. BOAT OPERATION

It shall be unlawful for a person to operate a boat in the designated No Wake Zone area in a manner that creates a wake or at a speed greater than that necessary to maintain steerage.

ARTICLE 7. SIGNS

The County Engineer's office shall insure that proper signs are placed within the boundaries of the "No Wake Zone". The absence of signs shall not render the No Wake Zone invalid

ARTICLE 8. PENALTIES

Any person or persons who shall violate any prvision of this Ordinance shall be guilty of a misdemeanor punishable by a fine not to exceed five hundred dollars (\$500.00) or imprisonment in the County Jail not to exceed sixty (60) days or both.

ARTICLE 9. EFFECTIVE DATE

This Ordinance shall take effect pursuant to law.

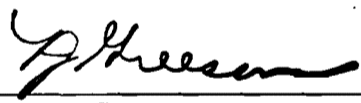
DONE and ADOPTED in regular session this 19 day of May, 1987.

BOARD OF COUNTY COMMISSIONERS
NASSAU COUNTY, FLORIDA



GENE R. BLACKWELDER
Its: Chairman

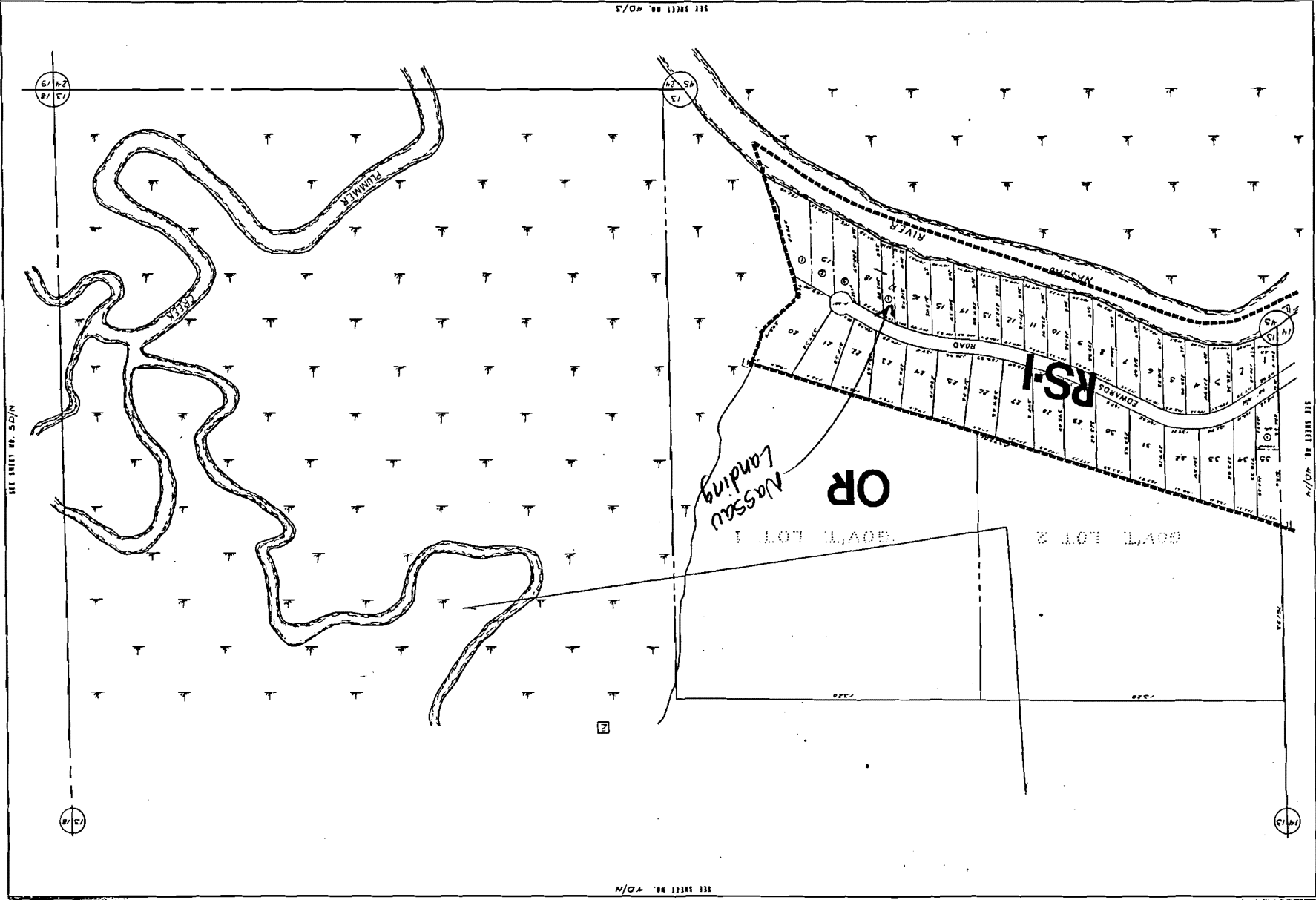
ATTEST:



T. J. Greeson
Its: Ex-Officio Clerk

SHEET NUMBER 4D
 SECTION 5 1/2 OF 13
 TOWNSHIP 2 N
 RANGE 26 E
 COMPLETED & DRAWN JANUARY, 1961
 MASSACHUSETTS COUNTY PROPERTY APPRAISERS
 FERRANDER BEACH, FLA.
 MASSACHUSETTS COUNTY
 FLORIDA
 APPRAISER MAP
 135

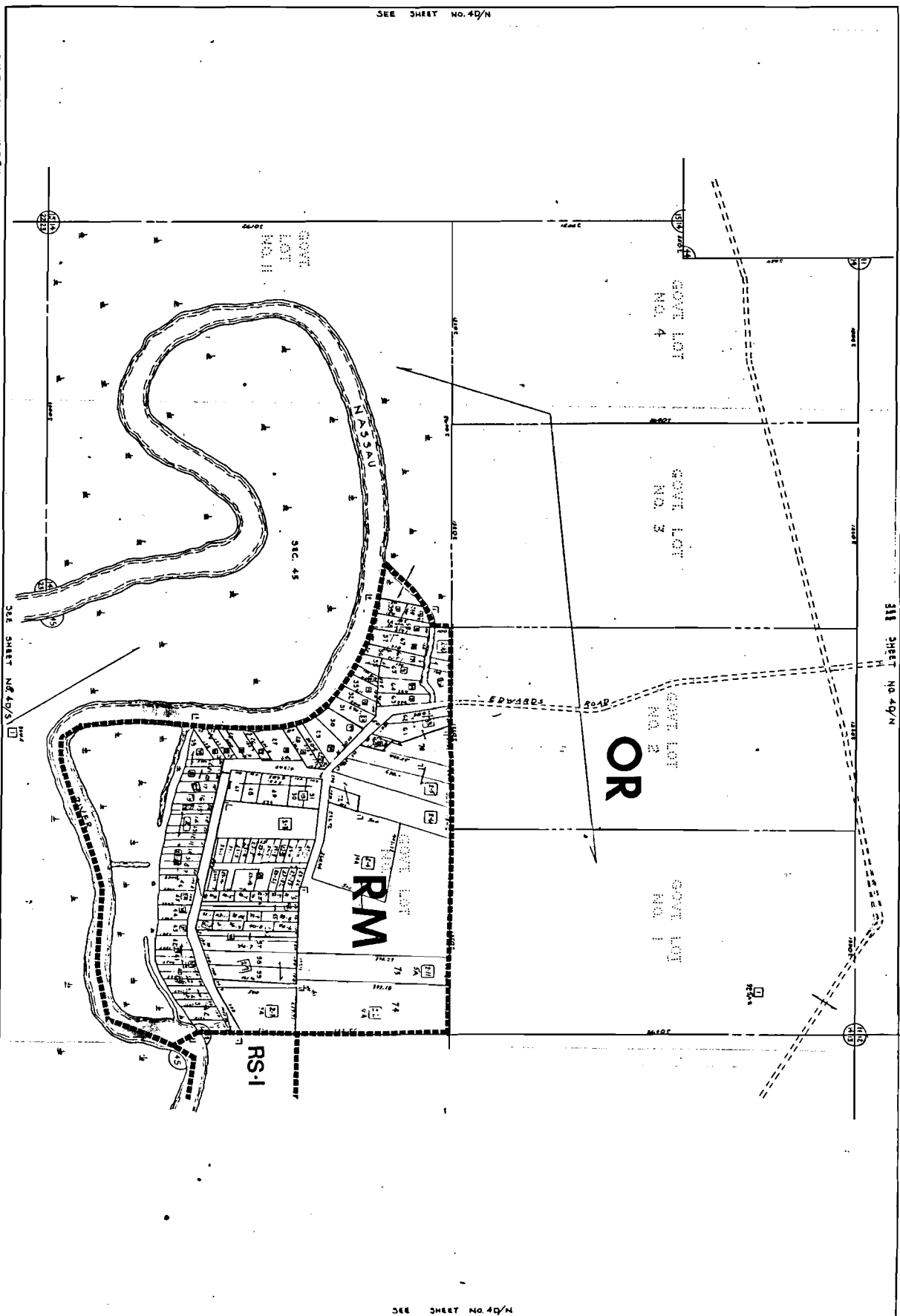
MASSACHUSETTS COUNTY
 PROPERTY APPRAISERS
 FERRANDER BEACH, FLA.



THIS MAP IS THE PROPERTY OF THE MASSACHUSETTS COUNTY PROPERTY APPRAISERS, FERRANDER BEACH, FLA. IT IS NOT TO BE REPRODUCED OR COPIED IN ANY MANNER WITHOUT THE WRITTEN PERMISSION OF THE APPRAISERS.

Exhibit "A"

ALL DIMENSIONS ARE IN FEET AND DECIMALS THEREOF UNLESS OTHERWISE SPECIFIED.



NO. SUB OF PART OF GOVT LOT 2

SUBDIVISION NAME

INDEX

P. D.

UNR

ASSIGNMENT PLAN

MASSAU COUNTY, FLORIDA

COMPILED & DRAWN BY
BENNETT & ASSOCIATES, INC.
271 SYDNEY, TAMPA, FLORIDA

SECTION 14

TOWNSHIP 24 N

RANGE 26 E

COMPLETED & DATED JANUARY 1988

REVISION DATE

PLACING PRINT

SHEET NUMBER

40

14

Exhibit 'A'